
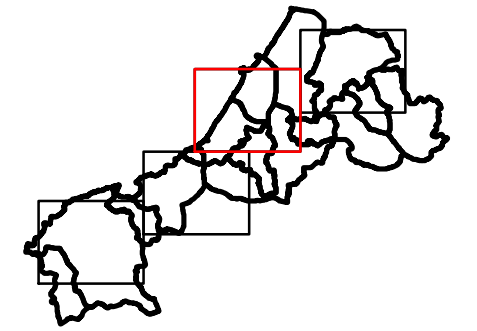
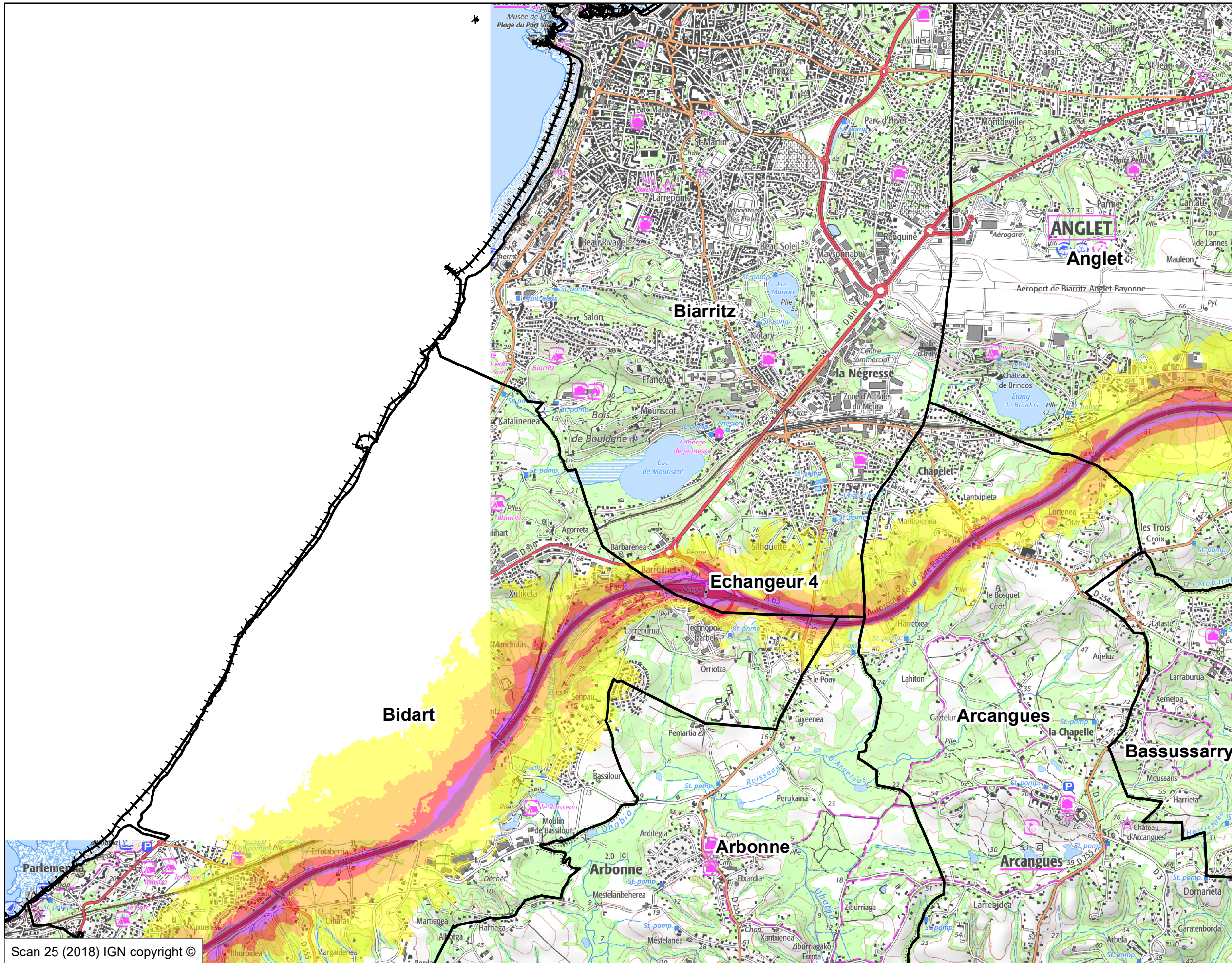


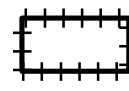
Année de référence du trafic :  
Trafic réel 2017

-  Limite département
-  Communes
-  > 75 dB(A)
-  entre 70 et 75 dB(A)
-  entre 65 et 70 dB(A)
-  entre 60 et 65 dB(A)
-  entre 55 et 60 dB(A)






Scan 25 (2018) IGN copyright ©



Année de référence du trafic :  
Trafic réel 2017

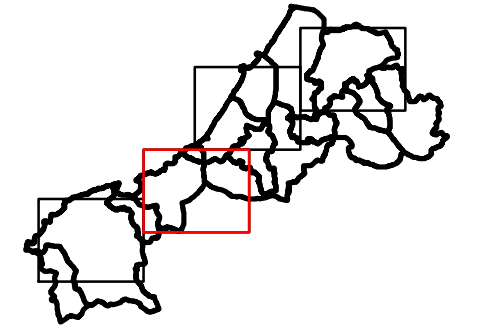
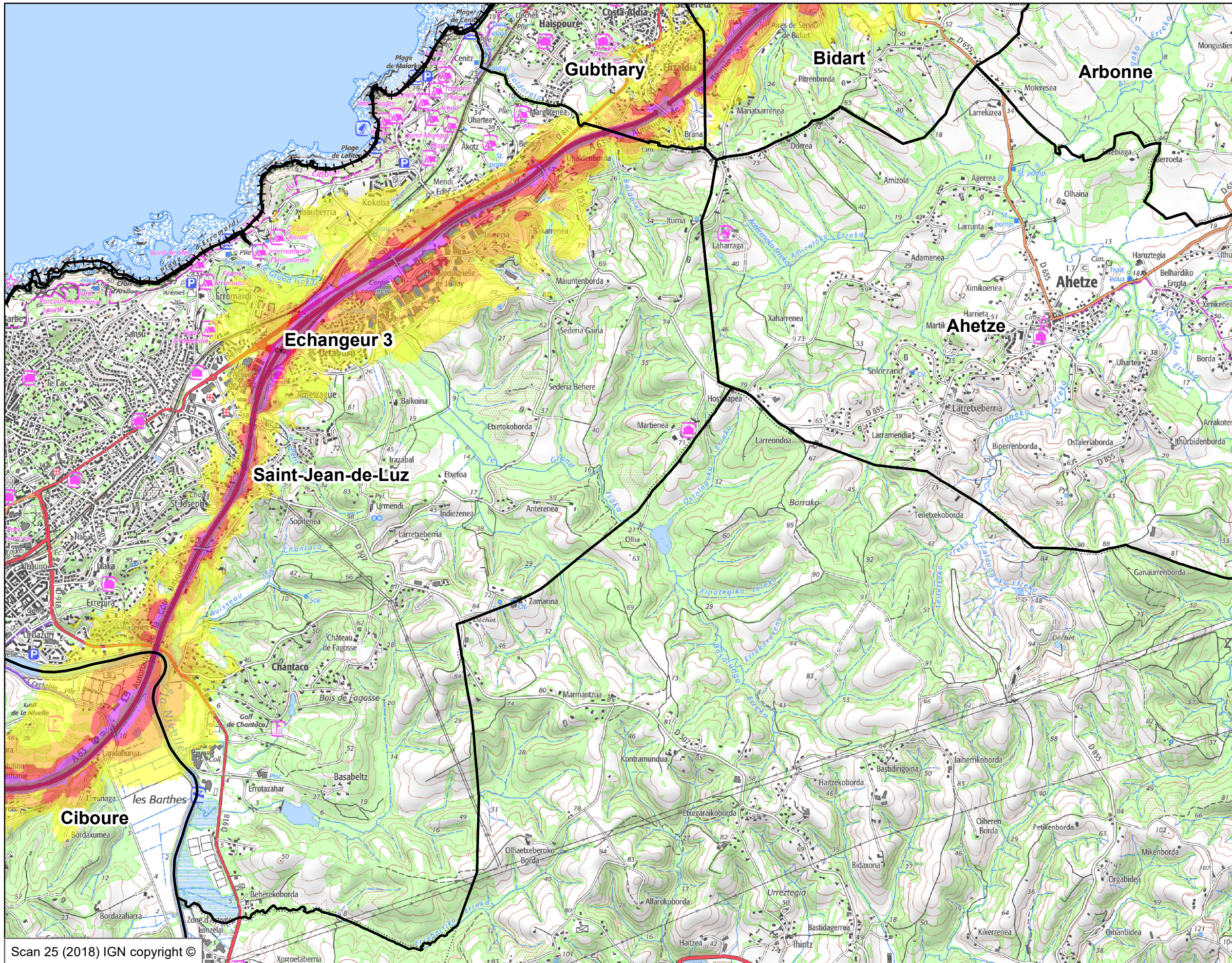
 Limite département

 Communes

-  > 75 dB(A)
-  entre 70 et 75 dB(A)
-  entre 65 et 70 dB(A)
-  entre 60 et 65 dB(A)
-  entre 55 et 60 dB(A)

Scan 25 (2018) IGN copyright ©

Echelle : 1:25 000



Année de référence du trafic :  
Trafic réel 2017

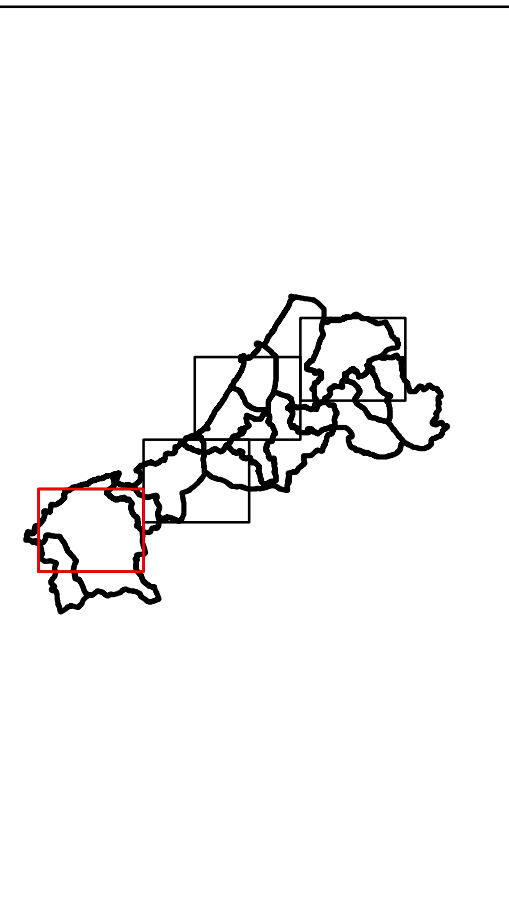
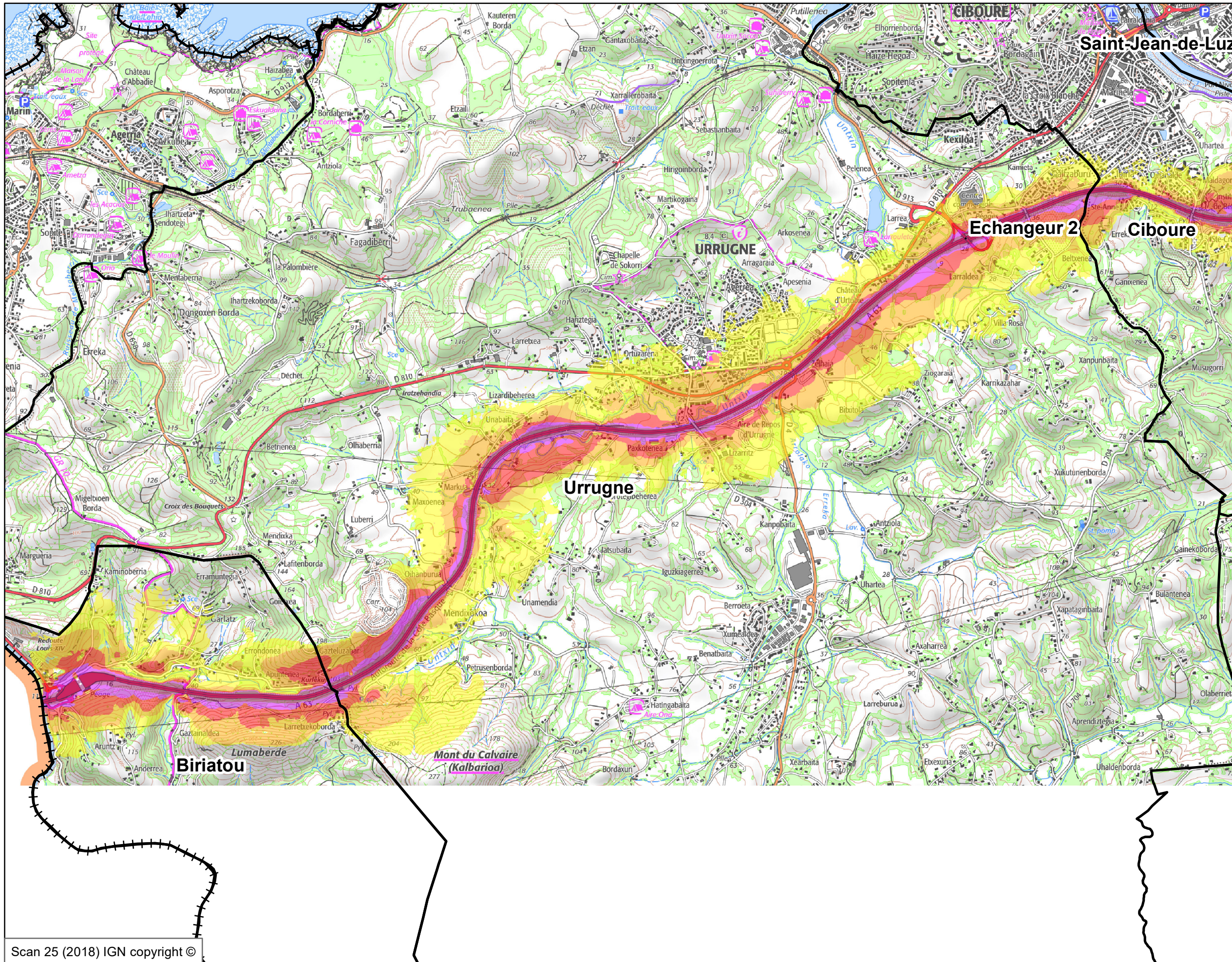
Limite département

Communes

- > 75 dB(A)
- entre 70 et 75 dB(A)
- entre 65 et 70 dB(A)
- entre 60 et 65 dB(A)
- entre 55 et 60 dB(A)

Scan 25 (2018) IGN copyright ©

Echelle : 1:25 000



Année de référence du trafic :  
Trafic réel 2017

-  Limite département
-  Communes
-  > 75 dB(A)
-  entre 70 et 75 dB(A)
-  entre 65 et 70 dB(A)
-  entre 60 et 65 dB(A)
-  entre 55 et 60 dB(A)

Scan 25 (2018) IGN copyright ©

Echelle : 1:25 000