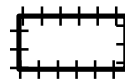





Année de référence du trafic :
Trafic réel 2017


 Limite département

 Communes

 > 70 dB(A)

 entre 65 et 70 dB(A)

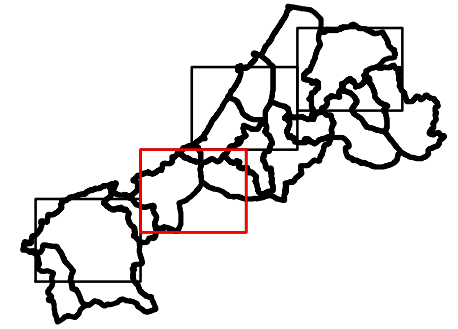
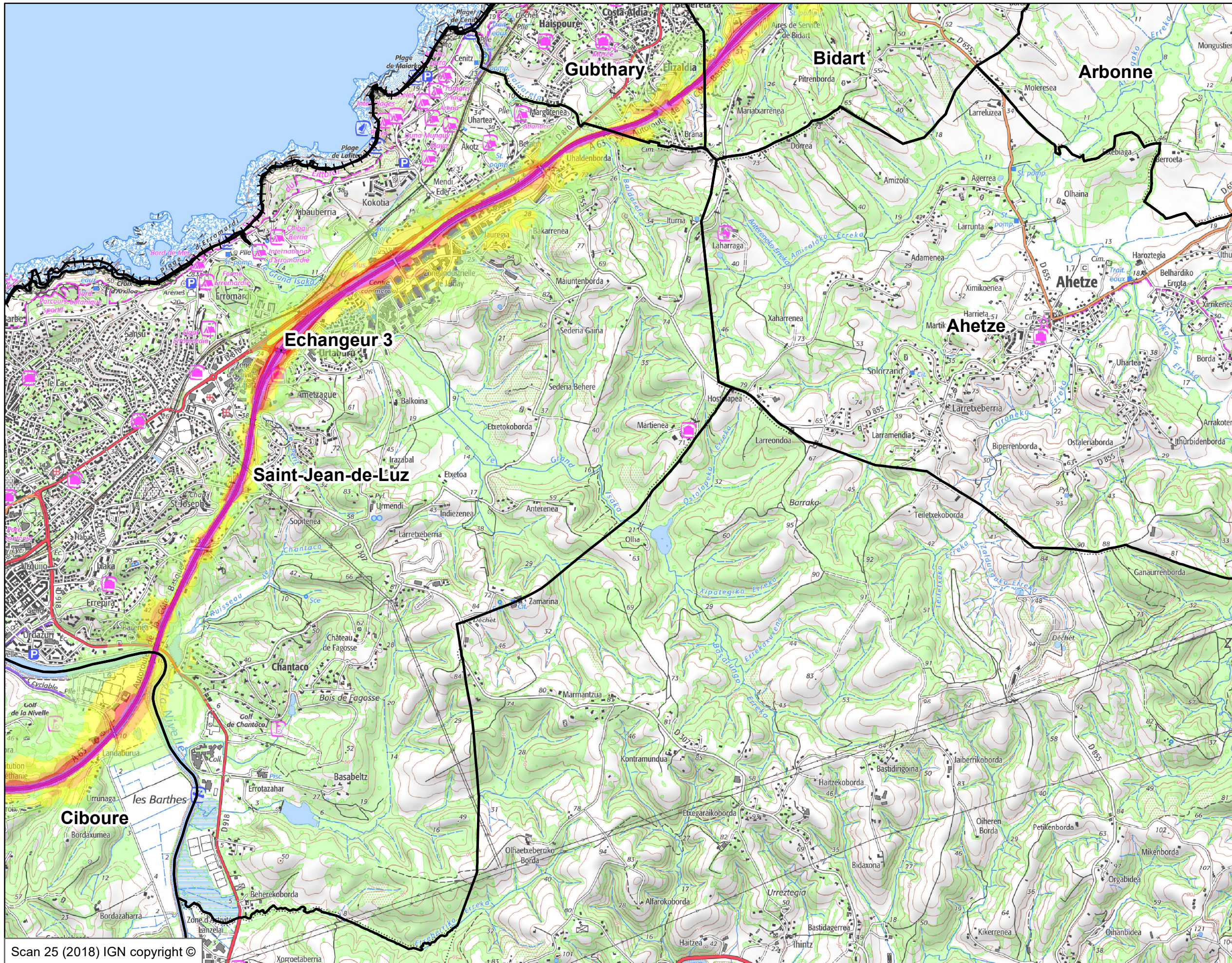
 entre 60 et 65 dB(A)

 entre 55 et 60 dB(A)

 entre 50 et 55 dB(A)

Scan 25 (2018) IGN copyright ©

Echelle : 1:25 000



Année de référence du trafic :
Trafic réel 2017

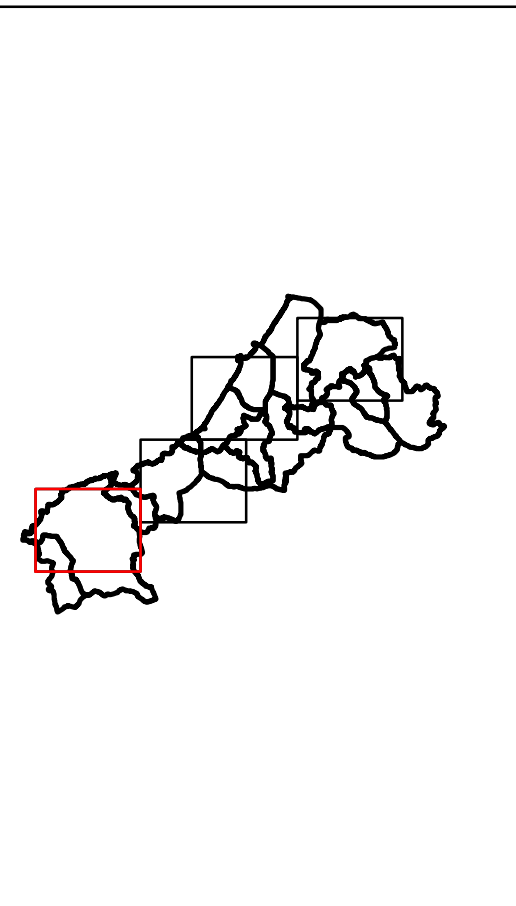
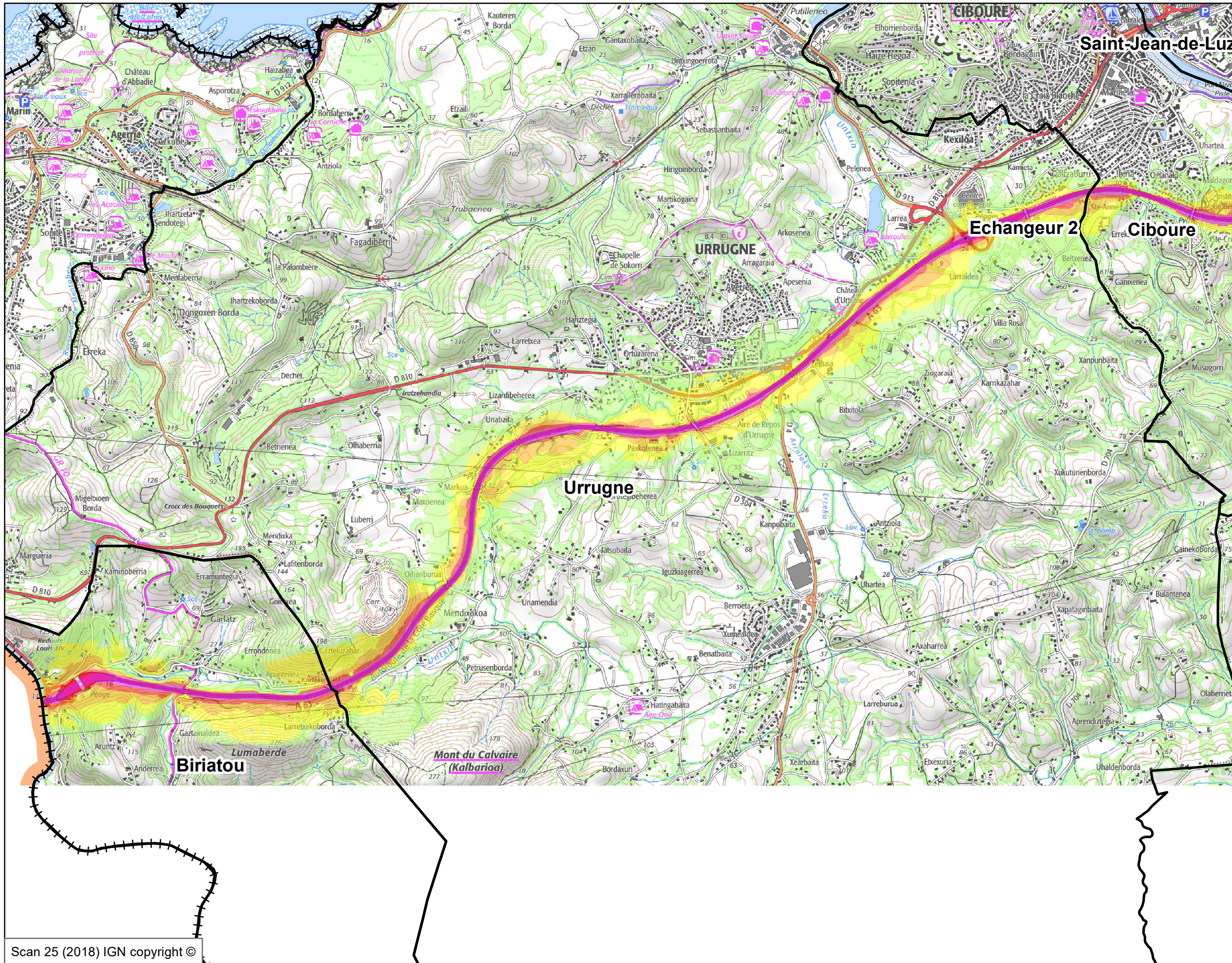
Limite département

Communes


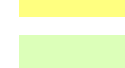
- > 70 dB(A)
- entre 65 et 70 dB(A)
- entre 60 et 65 dB(A)
- entre 55 et 60 dB(A)
- entre 50 et 55 dB(A)

Scan 25 (2018) IGN copyright ©

Echelle : 1:25 000



Année de référence du trafic :
Trafic réel 2017

-  Limite département
-  Communes
-  > 70 dB(A)
-  entre 65 et 70 dB(A)
-  entre 60 et 65 dB(A)
-  entre 55 et 60 dB(A)
-  entre 50 et 55 dB(A)

Scan 25 (2018) IGN copyright ©

Echelle : 1:25 000